

**Linear Brushless Ironless Three Phase Motor
LBIM-021-01 Series**

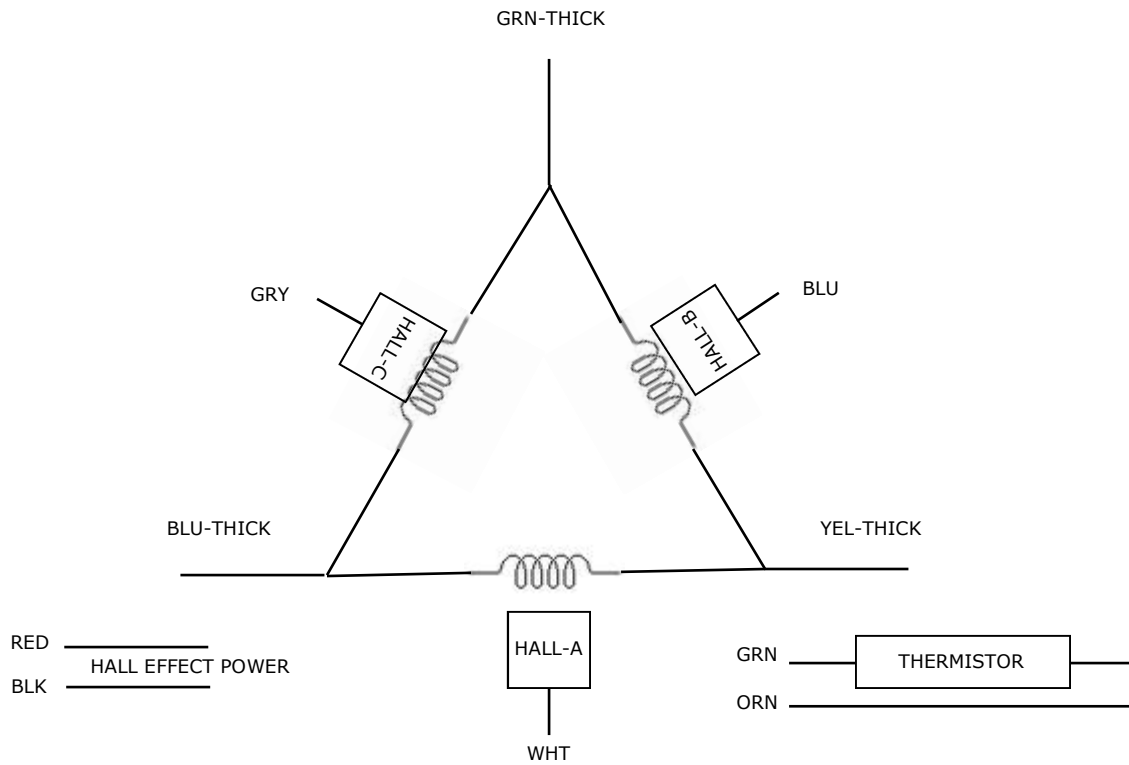
motiCont

MotiCont
6901 Woodley Avenue
Van Nuys, California 91406, USA
www.MotiCont.com

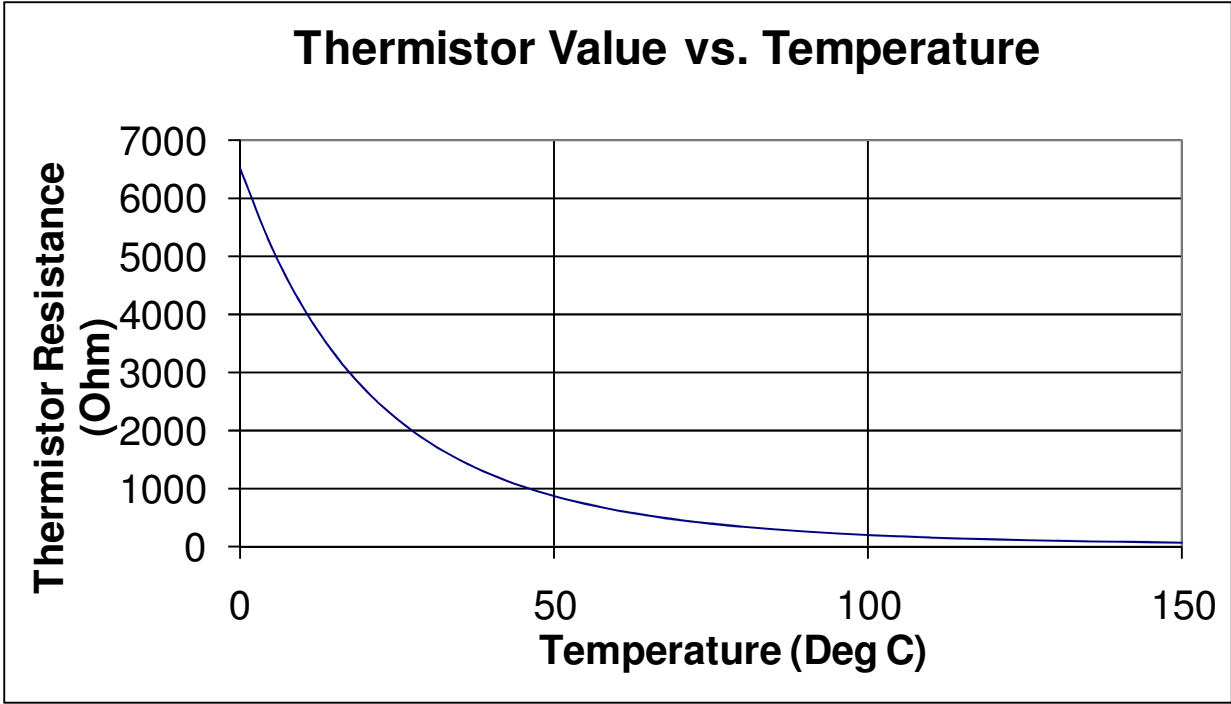
Phone (888) 785-1804
+1 (818) 785-1800
FAX +1 (818) 785-5713
MotiCont@MotiCont.com

Forcer		
LBF-021-029-081-01		
PERFORMANCE		
Intermittent Force @ 10% Duty Cycle	8.7	lb
	38.7	N
Continuous Force @ 25 °C	2.8	lb
	12.2	N
Continuous Force @ Tmax	2.1	lb
	9.3	N
Maximum Continuous Power	20	W
Motor Constant	0.6	lb/ W ^{0.5}
	2.7	N/ W ^{0.5}
ELECTRICAL SPECIFICATIONS	Delta	
Peak Current @ 10% Duty Cycle	4.6	A
Continuous Current @ Tmax	1.4	A
Force Constant	1.4	lb/A
	6.4	N/A
Back EMF	0.16	V/in/s
	6.4	V/m/s
Phase-to-Phase Resistance @ 25 °C	8.8	Ohm
Phase-to-Phase Inductance @ 1 KHz	2.8	mH
MECHANICAL SPECIFICATIONS		
Coil Assembly Mass	0.37	lb
	0.17	Kg
Magnetic Cogging Force	0	lb
Maximum Allowable Coil Temperature	110	°C
Electrical Cycle Length	1.6	in
	40.6	mm
THERMAL SPECIFICATIONS		
Thermal Time Constant	2	min
Thermal Resistance	4.25	°C/W

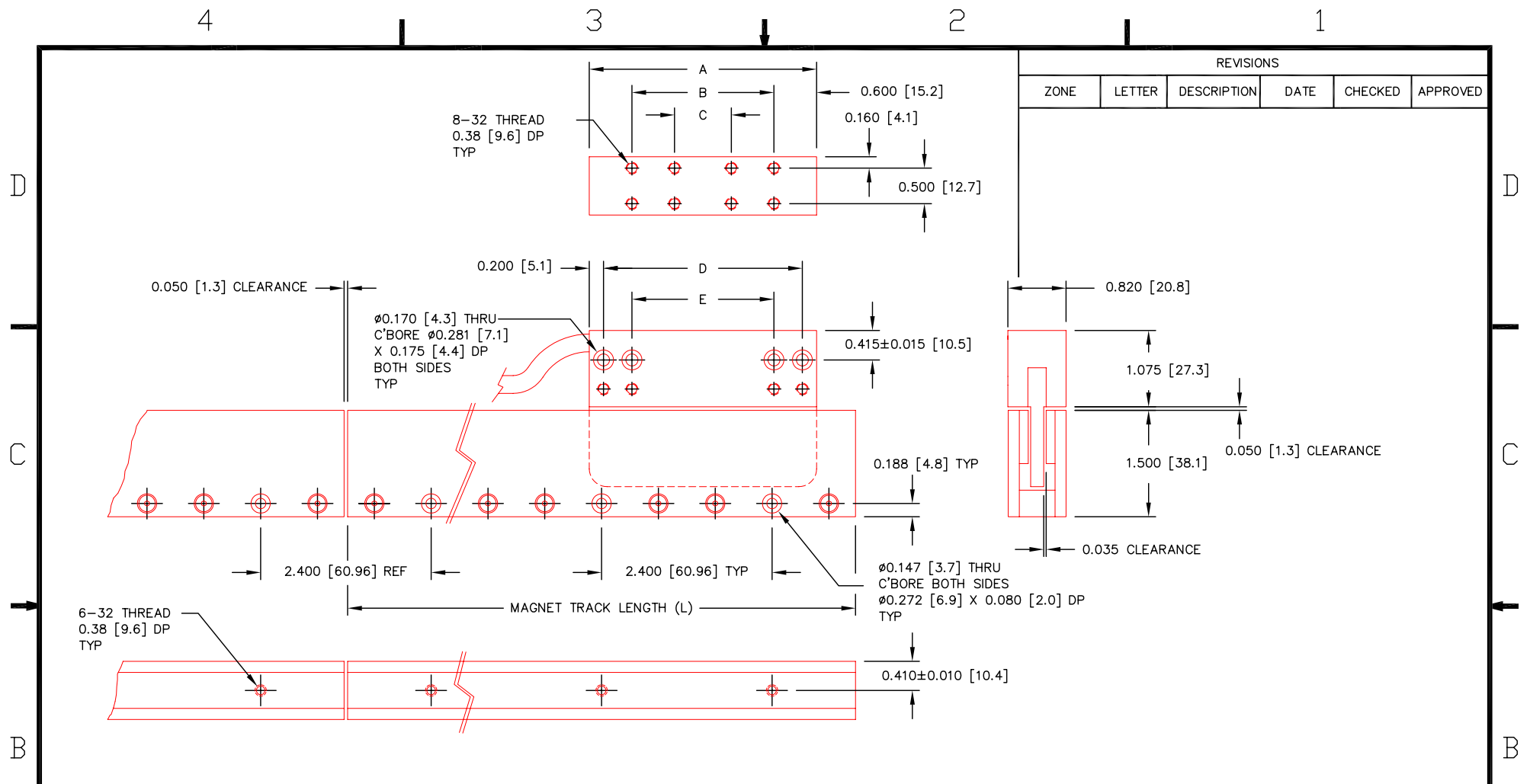
Magnetic Track		
LBM-021-038-XXX-01		
DIMENSIONS		
Width	0.82	in
	20.8	mm
Height	1.50	in
	38.1	mm
Length		
LBM-021-038-121-01	4.75	in
	121.7	mm
LBM-021-038-243-01	9.55	in
	242.6	mm
LBM-021-038-365-01	14.35	in
	364.5	mm
LBM-021-038-608-01	23.95	in
	608	mm
Mass		
All Models	0.23	lb/in
	4.13	Kg/m



Wire	Description
BLU-THICK	Motor Phase A
YEL-THICK	Motor Phase B
GRN-THICK	Motor Phase C
GRN	Thermistor
ORN	Thermistor
WHT	Commutation Sensor Output - A
BLU	Commutation Sensor Output - B
GRY	Commutation Sensor Output - C
RED	+5 VDC Logic Supply for Commutation Sensors (Hall Effects)
BLK	Ground for Commutation Sensor (Hall Effects)



Specifications are subject to change without notice.



REVISIONS					
ZONE	LETTER	DESCRIPTION	DATE	CHECKED	APPROVED

FORCER MODEL	A	B	C	D	E
LBF-021-029-081-01	3.200 [81.3]	2.000 [50.8]	N/A	2.800 [71.1]	N/A
LBF-021-029-161-01	6.350 [161.3]	5.150 [130.8]	2.000 [50.8]	5.950 [151.1]	3.000 [76.2]
LBF-021-029-241-01	9.500 [241.3]	8.300 [210.8]	2.000 [50.8]	9.100 [231.1]	3.000 [76.2]
LBF-021-029-321-01	12.650 [321.3]	11.450 [290.8]	2.000 [50.8]	12.250 [311.2]	3.000 [76.2]

MAGNET TRACK	L (LENGTH)
LBM-021-038-121-01	4.75 [120.7]
LBM-021-038-243-01	9.550 [242.6]
LBM-021-038-365-01	14.350 [364.5]
LBM-021-038-608-01	23.950 [608.3]

THIS DOCUMENT, WHETHER OR NOT MARKED AS PROPRIETARY, IS CONSIDERED CONFIDENTIAL AND SHALL REMAIN THE PROPERTY OF MOTICONT AND SHALL BE RETURNED TO MOTICONT UPON REQUEST WITH ALL COPIES MADE THEREOF. THIS DOCUMENT CANNOT BE UTILIZED IN THE MANUFACTURE OF ARTICLES SOLD OR OFFERED OR DISCLOSED TO ANYONE AND NO USE OF IT CAN BE MADE UNLESS EXPRESSLY AUTHORIZED BY AND UNDER THE DIRECTION OF MOTICONT. POSSESSION OF THIS DOCUMENT IS ACCEPTED SUBJECT TO THE FOREGOING.

DIMENSIONS ARE IN INCHES (mm) TOLERANCES ON: DECIMALS FRACTIONS ANGLES .XXX .XX ± 1/125 ± 1/2' ± .005 ± .01 UNLESS OTHERWISE SPECIFIED	
USED ON	NEXT ASSY
APPLICATION	

MATERIAL	CONTRACT	
FINISH	DRN	
	CHKD	
	APPVD	
	APPVD	

MOTICONT			
IRONLESS LINEAR MOTOR			
SIZE	CODE	DWG. NO.	REV.
A		LBIM-021-XX	1
SCALE: 1 / 2		SHEET 1 OF 1	

NOTES:
UNLESS OTHERWISE SPECIFIED

A

A

D

D

C

C

B

B